

**m.bath**  
14'-0" x 12'-8"

**wic**  
9'-5" x 9'-3"

**bedroom-5**  
13'-0" x 15'-4"

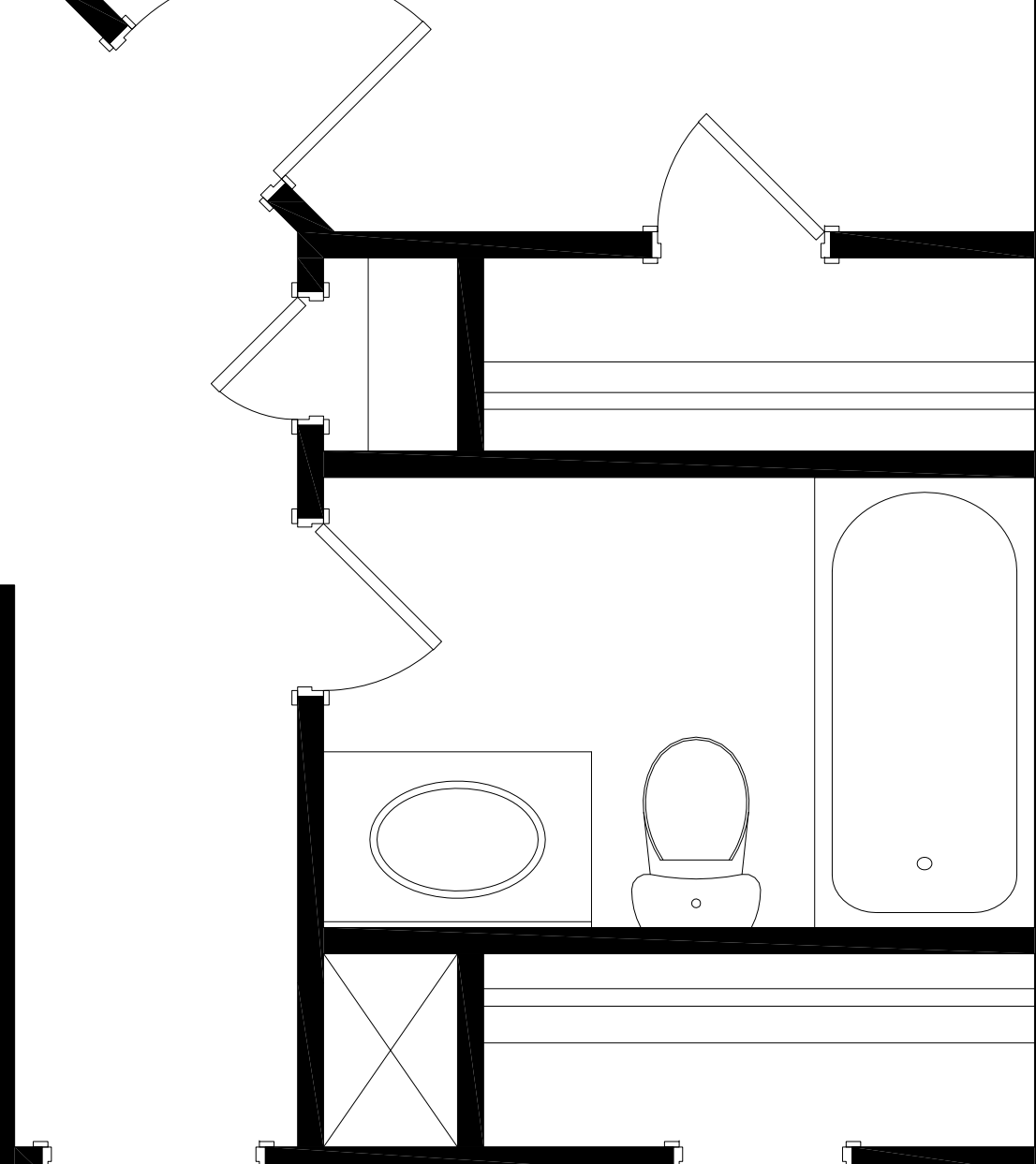
**bedroom-2**  
10'-8" x 12'-0"

**master bedroom**  
19'-8" x 17'-5"

**sitting area**  
11'-0" x 13'-2"

OPTIONAL

**open to below**



**bedroom-3**  
11'-5" x 10'-11"

**wic**  
10'-0" x 9'-8"