

BE THE PLANNING AND APPEALS COMMISSION
THIS FINAL LAND SUBDIVISION PLAT HAS BEEN OFFICIALLY EVALUATED FOR CONFORMANCE WITH THE SUBDIVISION ACT AND THE ZONING ORDINANCE OF THE CITY OF RINCON, GEORGIA. THE PLAT IS APPROVED FOR RECORDATION AND PLANNING AND APPEALS COMMISSION ON 07/17/08.
2008
CITY CLERK
CITY OF RINCON, GEORGIA

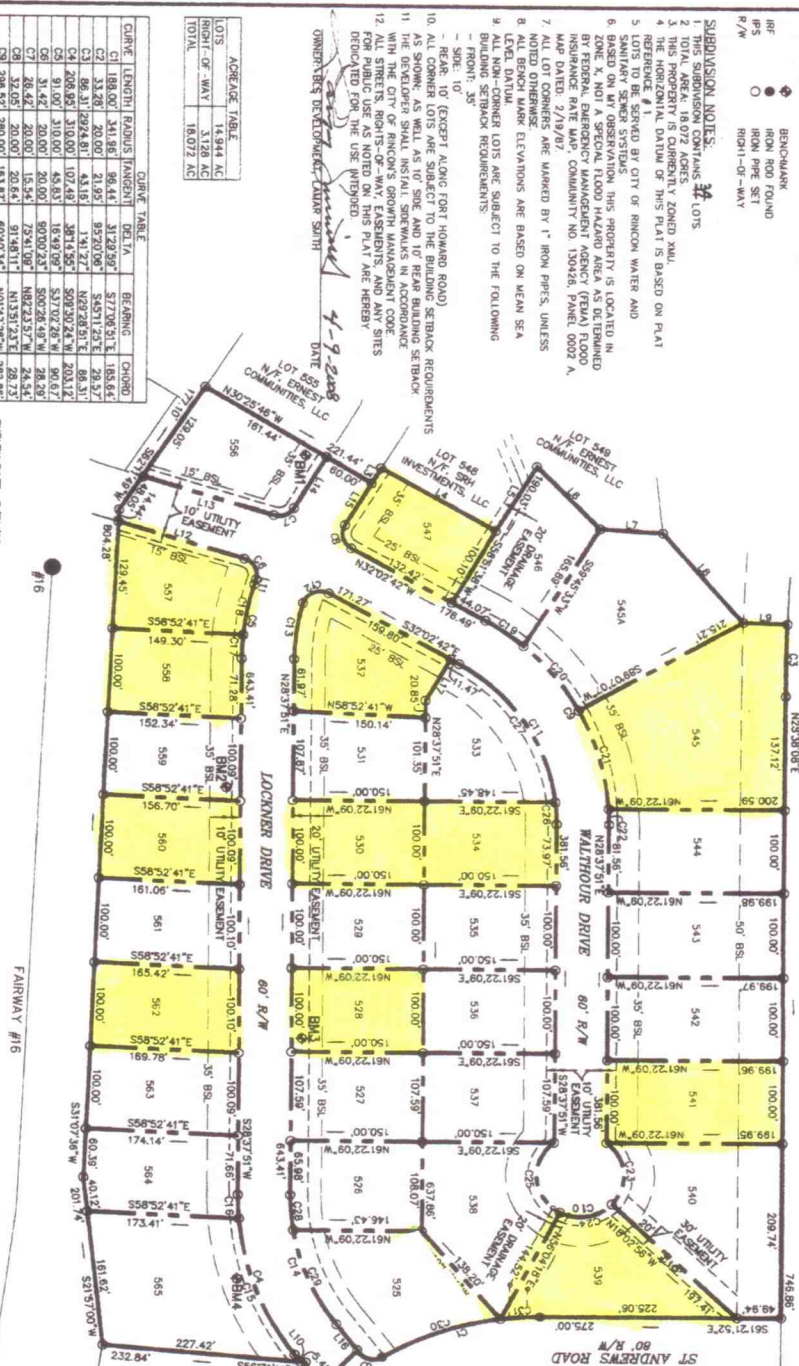
PERMISSION TO RECORD FOR THE PRESENT
CITY CLERK
CITY OF RINCON, GEORGIA

ALL LAND WHICH IS DEPICTED ON THIS FINAL SUBDIVISION PLAT AS DEDICATED FOR PUBLIC USE WAS ACCEPTED BY RESOLUTION OF THE MAYOR AND COUNCIL OF RINCON, GEORGIA ON 07/17/08.

2008 JUL 17 AM 11:45
BRENDA HESSY
CITY CLERK

APPROVED FOR RECORDATION
FOR THE CITY OF RINCON, GEORGIA
CITY CLERK

LOT #	ADDRESS	STREET ADDRESS	PT.
525	0.520	7228.7	LOCKNER DRIVE
526	0.520	7228.7	LOCKNER DRIVE
527	0.520	7228.7	LOCKNER DRIVE
528	0.520	7228.7	LOCKNER DRIVE
529	0.520	7228.7	LOCKNER DRIVE
530	0.520	7228.7	LOCKNER DRIVE
531	0.520	7228.7	LOCKNER DRIVE
532	0.520	7228.7	LOCKNER DRIVE
533	0.520	7228.7	LOCKNER DRIVE
534	0.520	7228.7	LOCKNER DRIVE
535	0.520	7228.7	LOCKNER DRIVE
536	0.520	7228.7	LOCKNER DRIVE
537	0.520	7228.7	LOCKNER DRIVE
538	0.520	7228.7	LOCKNER DRIVE
539	0.520	7228.7	LOCKNER DRIVE
540	0.520	7228.7	LOCKNER DRIVE
541	0.520	7228.7	LOCKNER DRIVE
542	0.520	7228.7	LOCKNER DRIVE
543	0.520	7228.7	LOCKNER DRIVE
544	0.520	7228.7	LOCKNER DRIVE
545	0.520	7228.7	LOCKNER DRIVE
546	0.520	7228.7	LOCKNER DRIVE
547	0.520	7228.7	LOCKNER DRIVE
548	0.520	7228.7	LOCKNER DRIVE
549	0.520	7228.7	LOCKNER DRIVE
550	0.520	7228.7	LOCKNER DRIVE
551	0.520	7228.7	LOCKNER DRIVE
552	0.520	7228.7	LOCKNER DRIVE
553	0.520	7228.7	LOCKNER DRIVE
554	0.520	7228.7	LOCKNER DRIVE
555	0.520	7228.7	LOCKNER DRIVE



LINE #	LENGTH	BEARING
L1	62.87	N71°14'28"E
L2	34.03	S01°18'28"W
L3	21.08	S89°43'45"W
L4	18.07	S81°57'03"W
L5	18.07	S81°57'03"W
L6	10.33	N10°28'52"E
L7	22.15	N82°42'46"W
L8	12.07	N89°40'25"W
L9	50.00	S00°00'00"W
L10	11.97	S00°23'40"E
L11	6.07	S43°22'01"W
L12	18.25	N44°13'22"E
L13	18.25	N44°13'22"E
L14	21.27	S89°43'28"W
L15	58.05	N09°45'28"E
L16	38.40	N08°13'35"E
L17	58.40	N08°13'35"E
L18	58.40	N08°13'35"E

FAIRWAY #16
LOCKNER DRIVE
ST ANDREW'S ROAD
FORD HOWARD ROAD

LOT #	ACREAGE TABLE
525	0.520
526	0.520
527	0.520
528	0.520
529	0.520
530	0.520
531	0.520
532	0.520
533	0.520
534	0.520
535	0.520
536	0.520
537	0.520
538	0.520
539	0.520
540	0.520
541	0.520
542	0.520
543	0.520
544	0.520
545	0.520
546	0.520
547	0.520
548	0.520
549	0.520
550	0.520
551	0.520
552	0.520
553	0.520
554	0.520
555	0.520

SURVEY DATE: 7/21/03
EQUIPMENT USED: SOKKIA TOTAL STATION
ADJUSTED BY COMPASS RULE
FIELD ERROR OF CLOSURE: 1/84,000

REFERENCE:
1. PLAT BY WILSON SURVEYING AND MAPPING, TITLED "COMPLETED ASSOCIATES", DATED 12/12/08, FILE NO. 2007K-0278
2. PLAT BY MICHAEL HUSSEY, CA, R/S # 2500 OF STEPHENSON AND PALMER ENGINEERING, INC. TITLED "A PORTION OF THE PLAT BY MICHAEL HUSSEY, CA, R/S # 2500 OF STEPHENSON AND PALMER ENGINEERING, INC. DATED 2/10/09"
3. PLAT BY MICHAEL HUSSEY, CA, R/S # 2500 OF STEPHENSON AND PALMER ENGINEERING, INC. TITLED "GENOVA SUBDIVISION AT 100' R/W"
4. PLAT BY MICHAEL HUSSEY, CA, R/S # 2500 OF STEPHENSON AND PALMER ENGINEERING, INC. TITLED "GENOVA SUBDIVISION AT 100' R/W"
5. PLAT BY MICHAEL HUSSEY, CA, R/S # 2500 OF STEPHENSON AND PALMER ENGINEERING, INC. TITLED "GENOVA SUBDIVISION AT 100' R/W"
6. PLAT BY MICHAEL HUSSEY, CA, R/S # 2500 OF STEPHENSON AND PALMER ENGINEERING, INC. TITLED "GENOVA SUBDIVISION AT 100' R/W"
7. PLAT BY MICHAEL HUSSEY, CA, R/S # 2500 OF STEPHENSON AND PALMER ENGINEERING, INC. TITLED "GENOVA SUBDIVISION AT 100' R/W"
8. PLAT BY MICHAEL HUSSEY, CA, R/S # 2500 OF STEPHENSON AND PALMER ENGINEERING, INC. TITLED "GENOVA SUBDIVISION AT 100' R/W"
9. PLAT BY MICHAEL HUSSEY, CA, R/S # 2500 OF STEPHENSON AND PALMER ENGINEERING, INC. TITLED "GENOVA SUBDIVISION AT 100' R/W"
10. PLAT BY MICHAEL HUSSEY, CA, R/S # 2500 OF STEPHENSON AND PALMER ENGINEERING, INC. TITLED "GENOVA SUBDIVISION AT 100' R/W"
11. PLAT BY MICHAEL HUSSEY, CA, R/S # 2500 OF STEPHENSON AND PALMER ENGINEERING, INC. TITLED "GENOVA SUBDIVISION AT 100' R/W"
12. PLAT BY MICHAEL HUSSEY, CA, R/S # 2500 OF STEPHENSON AND PALMER ENGINEERING, INC. TITLED "GENOVA SUBDIVISION AT 100' R/W"
13. PLAT BY MICHAEL HUSSEY, CA, R/S # 2500 OF STEPHENSON AND PALMER ENGINEERING, INC. TITLED "GENOVA SUBDIVISION AT 100' R/W"
14. PLAT BY MICHAEL HUSSEY, CA, R/S # 2500 OF STEPHENSON AND PALMER ENGINEERING, INC. TITLED "GENOVA SUBDIVISION AT 100' R/W"
15. PLAT BY MICHAEL HUSSEY, CA, R/S # 2500 OF STEPHENSON AND PALMER ENGINEERING, INC. TITLED "GENOVA SUBDIVISION AT 100' R/W"
16. PLAT BY MICHAEL HUSSEY, CA, R/S # 2500 OF STEPHENSON AND PALMER ENGINEERING, INC. TITLED "GENOVA SUBDIVISION AT 100' R/W"
17. PLAT BY MICHAEL HUSSEY, CA, R/S # 2500 OF STEPHENSON AND PALMER ENGINEERING, INC. TITLED "GENOVA SUBDIVISION AT 100' R/W"
18. PLAT BY MICHAEL HUSSEY, CA, R/S # 2500 OF STEPHENSON AND PALMER ENGINEERING, INC. TITLED "GENOVA SUBDIVISION AT 100' R/W"
19. PLAT BY MICHAEL HUSSEY, CA, R/S # 2500 OF STEPHENSON AND PALMER ENGINEERING, INC. TITLED "GENOVA SUBDIVISION AT 100' R/W"
20. PLAT BY MICHAEL HUSSEY, CA, R/S # 2500 OF STEPHENSON AND PALMER ENGINEERING, INC. TITLED "GENOVA SUBDIVISION AT 100' R/W"
21. PLAT BY MICHAEL HUSSEY, CA, R/S # 2500 OF STEPHENSON AND PALMER ENGINEERING, INC. TITLED "GENOVA SUBDIVISION AT 100' R/W"
22. PLAT BY MICHAEL HUSSEY, CA, R/S # 2500 OF STEPHENSON AND PALMER ENGINEERING, INC. TITLED "GENOVA SUBDIVISION AT 100' R/W"
23. PLAT BY MICHAEL HUSSEY, CA, R/S # 2500 OF STEPHENSON AND PALMER ENGINEERING, INC. TITLED "GENOVA SUBDIVISION AT 100' R/W"
24. PLAT BY MICHAEL HUSSEY, CA, R/S # 2500 OF STEPHENSON AND PALMER ENGINEERING, INC. TITLED "GENOVA SUBDIVISION AT 100' R/W"
25. PLAT BY MICHAEL HUSSEY, CA, R/S # 2500 OF STEPHENSON AND PALMER ENGINEERING, INC. TITLED "GENOVA SUBDIVISION AT 100' R/W"
26. PLAT BY MICHAEL HUSSEY, CA, R/S # 2500 OF STEPHENSON AND PALMER ENGINEERING, INC. TITLED "GENOVA SUBDIVISION AT 100' R/W"
27. PLAT BY MICHAEL HUSSEY, CA, R/S # 2500 OF STEPHENSON AND PALMER ENGINEERING, INC. TITLED "GENOVA SUBDIVISION AT 100' R/W"
28. PLAT BY MICHAEL HUSSEY, CA, R/S # 2500 OF STEPHENSON AND PALMER ENGINEERING, INC. TITLED "GENOVA SUBDIVISION AT 100' R/W"
29. PLAT BY MICHAEL HUSSEY, CA, R/S # 2500 OF STEPHENSON AND PALMER ENGINEERING, INC. TITLED "GENOVA SUBDIVISION AT 100' R/W"
30. PLAT BY MICHAEL HUSSEY, CA, R/S # 2500 OF STEPHENSON AND PALMER ENGINEERING, INC. TITLED "GENOVA SUBDIVISION AT 100' R/W"
31. PLAT BY MICHAEL HUSSEY, CA, R/S # 2500 OF STEPHENSON AND PALMER ENGINEERING, INC. TITLED "GENOVA SUBDIVISION AT 100' R/W"
32. PLAT BY MICHAEL HUSSEY, CA, R/S # 2500 OF STEPHENSON AND PALMER ENGINEERING, INC. TITLED "GENOVA SUBDIVISION AT 100' R/W"
33. PLAT BY MICHAEL HUSSEY, CA, R/S # 2500 OF STEPHENSON AND PALMER ENGINEERING, INC. TITLED "GENOVA SUBDIVISION AT 100' R/W"
34. PLAT BY MICHAEL HUSSEY, CA, R/S # 2500 OF STEPHENSON AND PALMER ENGINEERING, INC. TITLED "GENOVA SUBDIVISION AT 100' R/W"
35. PLAT BY MICHAEL HUSSEY, CA, R/S # 2500 OF STEPHENSON AND PALMER ENGINEERING, INC. TITLED "GENOVA SUBDIVISION AT 100' R/W"
36. PLAT BY MICHAEL HUSSEY, CA, R/S # 2500 OF STEPHENSON AND PALMER ENGINEERING, INC. TITLED "GENOVA SUBDIVISION AT 100' R/W"
37. PLAT BY MICHAEL HUSSEY, CA, R/S # 2500 OF STEPHENSON AND PALMER ENGINEERING, INC. TITLED "GENOVA SUBDIVISION AT 100' R/W"
38. PLAT BY MICHAEL HUSSEY, CA, R/S # 2500 OF STEPHENSON AND PALMER ENGINEERING, INC. TITLED "GENOVA SUBDIVISION AT 100' R/W"
39. PLAT BY MICHAEL HUSSEY, CA, R/S # 2500 OF STEPHENSON AND PALMER ENGINEERING, INC. TITLED "GENOVA SUBDIVISION AT 100' R/W"
40. PLAT BY MICHAEL HUSSEY, CA, R/S # 2500 OF STEPHENSON AND PALMER ENGINEERING, INC. TITLED "GENOVA SUBDIVISION AT 100' R/W"
41. PLAT BY MICHAEL HUSSEY, CA, R/S # 2500 OF STEPHENSON AND PALMER ENGINEERING, INC. TITLED "GENOVA SUBDIVISION AT 100' R/W"
42. PLAT BY MICHAEL HUSSEY, CA, R/S # 2500 OF STEPHENSON AND PALMER ENGINEERING, INC. TITLED "GENOVA SUBDIVISION AT 100' R/W"
43. PLAT BY MICHAEL HUSSEY, CA, R/S # 2500 OF STEPHENSON AND PALMER ENGINEERING, INC. TITLED "GENOVA SUBDIVISION AT 100' R/W"
44. PLAT BY MICHAEL HUSSEY, CA, R/S # 2500 OF STEPHENSON AND PALMER ENGINEERING, INC. TITLED "GENOVA SUBDIVISION AT 100' R/W"
45. PLAT BY MICHAEL HUSSEY, CA, R/S # 2500 OF STEPHENSON AND PALMER ENGINEERING, INC. TITLED "GENOVA SUBDIVISION AT 100' R/W"
46. PLAT BY MICHAEL HUSSEY, CA, R/S # 2500 OF STEPHENSON AND PALMER ENGINEERING, INC. TITLED "GENOVA SUBDIVISION AT 100' R/W"
47. PLAT BY MICHAEL HUSSEY, CA, R/S # 2500 OF STEPHENSON AND PALMER ENGINEERING, INC. TITLED "GENOVA SUBDIVISION AT 100' R/W"
48. PLAT BY MICHAEL HUSSEY, CA, R/S # 2500 OF STEPHENSON AND PALMER ENGINEERING, INC. TITLED "GENOVA SUBDIVISION AT 100' R/W"
49. PLAT BY MICHAEL HUSSEY, CA, R/S # 2500 OF STEPHENSON AND PALMER ENGINEERING, INC. TITLED "GENOVA SUBDIVISION AT 100' R/W"
50. PLAT BY MICHAEL HUSSEY, CA, R/S # 2500 OF STEPHENSON AND PALMER ENGINEERING, INC. TITLED "GENOVA SUBDIVISION AT 100' R/W"
51. PLAT BY MICHAEL HUSSEY, CA, R/S # 2500 OF STEPHENSON AND PALMER ENGINEERING, INC. TITLED "GENOVA SUBDIVISION AT 100' R/W"
52. PLAT BY MICHAEL HUSSEY, CA, R/S # 2500 OF STEPHENSON AND PALMER ENGINEERING, INC. TITLED "GENOVA SUBDIVISION AT 100' R/W"
53. PLAT BY MICHAEL HUSSEY, CA, R/S # 2500 OF STEPHENSON AND PALMER ENGINEERING, INC. TITLED "GENOVA SUBDIVISION AT 100' R/W"
54. PLAT BY MICHAEL HUSSEY, CA, R/S # 2500 OF STEPHENSON AND PALMER ENGINEERING, INC. TITLED "GENOVA SUBDIVISION AT 100' R/W"
55. PLAT BY MICHAEL HUSSEY, CA, R/S # 2500 OF STEPHENSON AND PALMER ENGINEERING, INC. TITLED "GENOVA SUBDIVISION AT 100' R/W"

LOT #	ACREAGE TABLE
525	0.520
526	0.520
527	0.520
528	0.520
529	0.520
530	0.520
531	0.520
532	0.520
533	0.520
534	0.520
535	0.520
536	0.520
537	0.520
538	0.520
539	0.520
540	0.520
541	0.520
542	0.520
543	0.520
544	0.520
545	0.520
546	0.520
547	0.520
548	0.520
549	0.520
550	0.520
551	0.520
552	0.520
553	0.520
554	0.520
555	0.520

1. CERTIFY THAT IN MY OPINION THIS IS AN ACCURATE REPRESENTATION OF THE LAND PLATTED AND HAS BEEN PREPARED IN CONFORMANCE WITH THE MINIMUM STANDARDS AND REQUIREMENTS OF GEORGIA LAW AND IS SATISFACTORY FOR RECORDING.

GRAPHIC SCALE: 1" = 100'